



MATCH NOTES

HUA HIN - THAILAND | Feb 10 - Feb 16, 2020 | \$275,000 | INTERNATIONAL

[Q] LEONIE KUNG (SUI #283) vs. [5] MAGDA LINETTE (POL #42)

Head to Head: 0-0

LEONIE KUNG	WTA RANKING	MAGDA LINETTE
283		42
135	PORSCHE RACE TO SHENZHEN LEADERBOARD	176
21-10-2000 (19)	DATE OF BIRTH (AGE)	12-02-1992 (28)
\$3,584	YTD PRIZE MONEY	\$79,578
\$60,250	CAREER PRIZE MONEY	\$2,444,437
0 / 0	SINGLES TITLES (YTD / CAREER)	0 / 1
0 / 0	DOUBLES TITLES (YTD / CAREER)	0 / 0
4-0	HUA HIN W-L (MD) *	9-3
4-0 / 4-1	YTD / CAREER W-L (MD) *	6-3 / 86-97
2-0 / 2-0	YTD / CAREER 3-SET W-L (MD) *	1-1 / 30-33
0-0 / 0-0	YTD / CAREER TIE-BREAK W-L (MD) *	2-0 / 30-18
4-0 / 4-0	YTD / CAREER HARD W-L (MD) *	6-3 / 71-67
0-0 / 0-0	YTD / CAREER Left Hander W-L (MD) *	0-1 / 4-6
0-0 / 0-0	YTD / CAREER TOP 5 W-L (MD & Q) *	0-0 / 0-6
0-0 / 0-0	YTD / CAREER TOP 10 W-L (MD & Q) *	0-0 / 0-11
0-0 / 0-0	YTD / CAREER TOP 20 W-L (MD & Q) *	0-0 / 1-22

* Updated entering 2020 Hua Hin F

ROAD TO THE FINAL

[Q] LEONIE KUNG (SUI #283)

R2-Q: d. FANG YING XUN (CHN #207) 6-4,6-3 (1h31)

R1-Q: d. YANIN WISITWARAPON (THA #9,999) 6-0,6-1 (0h44)

SF: d. [8] NAO HIBINO (JPN #84) 7-5,4-6,6-3 (2h29)

QF: d. [3] QIANG WANG (CHN #27) 7-5,4-6,6-4 (2h17)

R16: d. [7] LIN ZHU (CHN #70) 6-3,6-1 (1h10)

R32: d. PATCHARIN CHEAPCHANDEJ (THA #811) 6-0,6-3 (0h51)

Total games: 94

Won/lost: 58-36

Sets won/lost: 8-2

Total time on court: 6h47

Average time on court: 1h42

Average rank of opponent: 248

[5] MAGDA LINETTE (POL #42)

SF: d. PATRICIA MARIA TIG (ROU #105) 7-5,6-4 (1h34)

QF: d. XIYU WANG (CHN #134) 2-6,6-3,6-3 (1h56)

R16: d. SHUAI PENG (CHN #106) 7-5,6-1 (1h35)

R32: d. KATERYNA BONDARENKO (UKR #495) 6-2,6-2 (1h06)

Total games: 83

Won/lost: 52-31

Sets won/lost: 8-1

Total time on court: 6h11

Average time on court: 1h33

Average rank of opponent: 210



MATCH NOTES

HUA HIN - THAILAND | Feb 10 - Feb 16, 2020 | \$275,000 | INTERNATIONAL

HUA HIN Tournament History

"-Q" Qualifying match

MAGDA LINETTE

2019

SF L - DAYANA YASTREMSKA (UKR #47) 6-4 6-3

2018

QF L - TIMEA BABOS (HUN #45) 6-1 6-3

2017

R1 L - LIN ZHU (CHN #122) 6-3 5-7 6-4

KUNG:

- Making tournament debut here in Hua Hin in only second WTA main draw appearance
- Earned first career WTA main draw wins in previous rounds over Cheapchandej in 1r and No.7 Zhu in 2r
- Shocked No.3 seed Wang Q. in QF to make first career WTA SF and followed it up with win over No.8 seed Hibino in SF
- Coming off four ITF tournament appearances most recently reaching SF at ITF \$25k/Nonthaburi-THA (l. Raina)
- Broke into WTA Top 300 earlier this year on Feb. 3
- Made WTA main draw debut in 2018 Gstaad (l. Larsson in 1r) – has yet to play in a major main draw
- Also in 2018, finished R-Up in Wimbledon junior's final (l. Swiatek) – defeated McNally and Wang, Xiy. in QF and SF
- Owns five singles titles on ITF circuit, most recently at ITF \$15k/Anatalya 31-TUR (d. Craciun)
- Made professional debut on ITF circuit in 2014

LINETTE:

- Playing for fourth consecutive time at the Hua Hin tournament where she has matched her best result reaching SF in 2019 (l. eventual champion Yastremska), QF in 2018 and ell in 1r in 2017 (l. Zhu)
- Won her first two matches in straight sets over Bondarenko in 1r and Peng in 2r
- Defeated teenager Xiyu Wang in the QF in 3s – the only set she's dropped this tournament
- Advanced to the finals with another straight set victory over Tig in SF
- Owns 1-2 record in career WTA finals – last reaching this stage at 2019 Seoul (l. Muchova in F)
- Posted first career Top 50 year-end finish in 2019 after reaching her career high of No.41 on Sept. 30
- Won maiden WTA singles titles at the Bronx and finished R-Up at Seoul (l. Muchova)
- Other 2019 highlights include SF at Hua Hin (l. eventual champion Yastremska), QF at Nanchang (l. eventual champion Peterson), Tianjin (l. Watson)
- Posted fourth consecutive Top 100 season in 2018 at No.83
- Reached QF at 2018 Washington DC (l. Vekic); win over No.17 Osaka in 2r was first Top 20 victory – previous career-best win came over No.21 Gavrilova at 2017 Tokyo [PPO]
- Appeared in third career WTA doubles final at 2017 Bogotá (w/Cepede Royg), having also been runner-up at 2014 Guangzhou (w/Cornet) and 2016 Hong Kong (w/Xu)
- 2017 highlighted by SF at Kuala Lumpur (l. Hibino). Also made QF at Bogotá and reached 3r at major for first time at Roland Garros
- In 2016 enjoyed run to first Premier-level quarterfinal of career at Tokyo [PPO] (as qualifier, l. eventual champion Wozniacki)
- Broke into Top 100 on June 15, 2015
- Reached maiden WTA singles final at 2015 Tokyo [Japan Open] (l. Wickmayer)
- At WTA 125K Series level, won title at Ningbo in 2014 and was R-Up at Bol in 2018
- At 2013 Baku, made SF in second WTA main draw appearance (l. Peer)
- Played first two WTA main draws in 2013: 2r at Strasbourg (l. Cornet) and SF at Baku (l. Peer)
- Made professional debut on ITF Circuit in Poland in 2007 - owns 10 singles titles and eight doubles titles at that level

ARINA RODIONOVA



AUS

85

Doubles
Ranking

45

Race To
Shenzhen

Dec 15, 1989 (30)

Tambov, Russia

RH (two-handed backhand)

5' 6" (1.68 m)

\$1,409,103

\$119,949

116 (Oct 23 2017)

41 (Jul 27 2015)

0 / 0

0 / 0

DOB

Residence

Plays

Height

Prize Career

Prize YTD

Career High Singles Rank

Career High Doubles Rank

WTA Singles Titles - YTD / Career

WTA Doubles Titles - YTD / Career

Aug 11, 1994 (25)

Melbourne, Australia

LH (two-handed backhand)

5' 5" (1.66 m)

\$387,099

\$45,013

202 (Feb 10 2014)

63 (Oct 09 2017)

0 / 0

0 / 1



AUS

99

Doubles
Ranking

79

Race To
Shenzhen

PERFORMANCE - DOUBLES

MD YTD (2020) / CAREER	STATS	MD YTD (2020) / CAREER
0-0 / 1-1	Tournament (HUA HIN) W - L	0-0 / 0-1
1-1 / 13-23	Grand Slam W - L	0-1 / 2-11
2-3 / 85-118	Overall W - L	0-2 / 19-37
- / 33-51	3 Set W - L	0-1 / 6-18
2-0 / 68-28	1 Set W - L	2-0 / 68-28
1-0 / 33-22	Tie Break W - L	0-0 / 3-7
2-3 / 60 - 78	Surface (HARD) W - L	0-2 / 12 - 29
0-0 / 14 - 26	Surface (CLAY) W - L	0-0 / 2 - 4
0-0 / 11 - 14	Surface (GRASS) W - L	0-0 / 5 - 4

PREVIOUS APPEARANCES AS TEAM

TOURNAMENT - WON (None)

TOURNAMENT - RUNNER UP (None)

OTHER RESULTS (BEST ROUND REACHED)

- SF at 2019 Taipei (Carpet) I. Y.Lee/F.Wu 6-3 6-4

- R16 at 2019 Shenzhen 3 (Hard) I. X.Jiang/Q.Tang 7-5 4-6 10-8

TOURNAMENT HISTORY - DOUBLES

2020 Season Summary

A.RODIONOVA

3 tournaments in 2020:

- R16 Main Draw in Adelaide
Partner: P.Hon (I. T.Maria/A.Potapova 6-3 6-1)

S.SANDERS

3 tournaments in 2020:

- W in Burnie
Partner: E.Perez (d. D.Krawczyk/A.Muhammad 6-3 6-2)



Doubles Team Profile & Performance - HUA HIN

HUA HIN, THAILAND | FEBRUARY 10 - 16, 2020 | USD \$275,000 INTERNATIONAL

All data as at Monday, Feb 10 2020

A.RODIONOVA

- R2 Main Draw in Australian Open
Partner: J.Fourlis (l. E.Mertens/A.Sabalenka 6-2 7-5)
- Q Main Draw in Auckland
Partner: J.Moore (l. C.Gauff/C.Mcnally 6-3 6-2)

Best Previous Results (HUA HIN)

A.RODIONOVA

1 appearance at HUA HIN:

- QF Main Draw in 2018 Partner: C.Lister (l. N.Hibino/O.Kalashnikova 6-2 6-2)

S.SANDERS

- R16 Main Draw in Brisbane
Partner: P.Hon (l. S.Hsieh/B.Strycova 6-3 6-4)
- R1 Main Draw in Australian Open
Partner: P.Hon (l. A.Muhammad/S.Santamaria 6-3 3-6 6-3)

S.SANDERS

1 appearance at HUA HIN:

- R16 Main Draw in 2018 Partner: M.Adamczak (l. C.Lister/A.Rodionova 6-2 6-2)

GRAND SLAM

A.RODIONOVA	W / L	'20	'19	'18	'17	'16	'15	'14	'13	'12	'11	'10
AUSTRALIAN OPEN	6-9	2R	1R	1R	1R	QF	2R	1R	1R	2R	-	-
ROLAND GARROS	2-3	-	1R	-	-	1R	3R	-	-	-	-	1R
WIMBLEDON	5-7	-	2R	2R	2R	-	2R	2R	-	-	2R	1R
US OPEN	0-4	-	-	-	1R	1R	1R	-	-	-	-	1R

TOTAL 13-23

S.SANDERS	W / L	'20	'19	'18	'17	'16	'15	'14	'13	'12
AUSTRALIAN OPEN	1-8	1R	-	1R	1R	2R	1R	1R	1R	1R
ROLAND GARROS	0-1	-	1R	-	-	-	-	-	-	-
WIMBLEDON	1-2	-	1R	-	2R	-	-	-	-	-
US OPEN	0-0	-	-	-	-	-	-	-	-	-

TOTAL 2-11

CAREER HIGHLIGHTS

A.RODIONOVA

DOUBLES

Finalist (3): 2019 - Nottingham (w/Perez); 2017 - Budapest (w/Voskoboeva); 2015 - Monterrey (w/An.Rodionova); 2014 - Hong Kong (w/Mayr-Achleitner); 2013 - Kuala Lumpur (w/An.Rodionova).

S.SANDERS

DOUBLES

Winner (1): 2017 - Nottingham (w/Adamczak).
Finalist (2): 2017 - Tokyo (International) (w/Adamczak), Guangzhou (w/Adamczak).

CAREER IN REVIEW

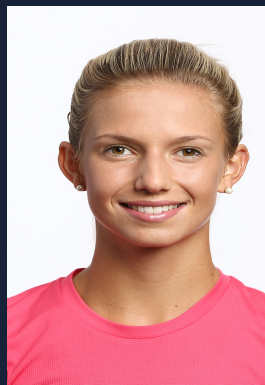


Doubles Team Profile & Performance - HUA HIN

HUA HIN, THAILAND | FEBRUARY 10 - 16, 2020 | USD \$275,000 INTERNATIONAL

All data as at Monday, Feb 10 2020

BARBARA HAAS



AUT

287

Doubles
Ranking

833

Race To
Shenzhen

Mar 19, 1996 (23)

Steyr, Austria

RH (Two-handed backhand)

5' 4" (1.65 m)

\$421,664

\$36,541

134 (Sep 19 2016)

285 (Feb 03 2020)

0 / 0

0 / 0

DOB

Residence

Plays

Height

Prize Career

Prize YTD

Career High Singles Rank

Career High Doubles Rank

WTA Singles Titles - YTD / Career

WTA Doubles Titles - YTD / Career

Oct 10, 1995 (24)

Shellharbour, NSW

LH (Left-handed

5' 5" (1.69 m)

\$405,897

\$32,310

162 (Aug 12 2019)

53 (Feb 03 2020)

0 / 0

0 / 1



AUS

53

Doubles
Ranking

44

Race To
Shenzhen

PERFORMANCE - DOUBLES

MD YTD (2020) / CAREER	STATS	MD YTD (2020) / CAREER
0-0 / 0-0	Tournament (HUA HIN) W - L	0-0 / 0-0
- / 0-0	Grand Slam W - L	0-1 / 3-7
- / 4-8	Overall W - L	0-2 / 17-20
- / 2-2	3 Set W - L	0-2 / 5-11
- / 3-1	1 Set W - L	- / 3-1
- / 3-1	Tie Break W - L	0-1 / 4-8
0-0 / 4 - 6	Surface (HARD) W - L	0-2 / 8 - 15
0-0 / 0 - 2	Surface (CLAY) W - L	0-0 / 5 - 2
0-0 / -	Surface (GRASS) W - L	0-0 / 4 - 3

PREVIOUS APPEARANCES AS TEAM

TOURNAMENT - WON (None)

TOURNAMENT - RUNNER UP (None)

OTHER RESULTS (BEST ROUND REACHED)

TOURNAMENT HISTORY - DOUBLES

2020 Season Summary

0 tournaments in 2020

E.PEREZ

3 tournaments in 2020:

- W in Burnie
Partner: S.Sanders (d. D.Krawczyk/A.Muhammad 6-3 6-2)
- R16 Main Draw in Brisbane



Doubles Team Profile & Performance - HUA HIN

HUA HIN, THAILAND | FEBRUARY 10 - 16, 2020 | USD \$275,000 INTERNATIONAL

All data as at Monday, Feb 10 2020

F PEREZ

Best Previous Results (HUA HIN)

Player has never previously played at this tournament.

Player has never previously played at this tournament.

GRAND SLAM

	W / L	'20	'19	'18	'17	'16
AUSTRALIAN OPEN	0-0	1R	1R	2R	1R	1R
ROLAND GARROS	0-0	-	-	-	-	-
WIMBLEDON	0-0	-	1R	-	-	-
US OPEN	0-0	-	3R	-	-	-
TOTAL	0-0					

E.PEREZ	W / L	'20	'19	'18	'17	'16
AUSTRALIAN OPEN	1-5	1R	1R	2R	1R	1R
ROLAND GARROS	0-0	-	-	-	-	-
WIMBLEDON	0-1	-	1R	-	-	-
US OPEN	2-1	-	3R	-	-	-
TOTAL	3-7					

CAREER HIGHLIGHTS

B.HAAS

CAREER IN REVIEW

DOUBLES

Winner (1): 2019 - Strasbourg (w/Gavrilova).

Finalist (1): 2019 - Nottingham (w/Ar.Rodionova).



MATCH NOTES

HUA HIN - THAILAND | Feb 10 - Feb 16, 2020 | \$275,000 | INTERNATIONAL

PATRICIA MARIA TIG (ROU #105) vs. [5] MAGDA LINETTE (POL #42)

Head to Head: MAGDA LINETTE leads 1-0

2012 DOBRICH CLAY O R1 MAGDA LINETTE 6-4 6-4

PATRICIA MARIA TIG	WTA RANKING	MAGDA LINETTE
105		42
205	PORSCHE RACE TO SHENZHEN LEADERBOARD	176
27-07-1994 (25)	DATE OF BIRTH (AGE)	12-02-1992 (28)
\$15,490	YTD PRIZE MONEY	\$79,578
\$708,308	CAREER PRIZE MONEY	\$2,444,437
0 / 0	SINGLES TITLES (YTD / CAREER)	0 / 1
0 / 0	DOUBLES TITLES (YTD / CAREER)	0 / 0
3-0	HUA HIN W-L (MD) *	8-3
3-0 / 27-28	YTD / CAREER W-L (MD) *	5-3 / 85-97
1-0 / 7-9	YTD / CAREER 3-SET W-L (MD) *	1-1 / 30-33
1-0 / 9-3	YTD / CAREER TIE-BREAK W-L (MD) *	2-0 / 30-18
3-0 / 16-15	YTD / CAREER HARD W-L (MD) *	5-3 / 70-67
0-0 / 1-1	YTD / CAREER Left Hander W-L (MD) *	0-1 / 4-6
0-0 / 0-0	YTD / CAREER TOP 5 W-L (MD & Q) *	0-0 / 0-6
0-0 / 0-0	YTD / CAREER TOP 10 W-L (MD & Q) *	0-0 / 0-11
0-0 / 2-2	YTD / CAREER TOP 20 W-L (MD & Q) *	0-0 / 1-22

* Updated entering 2020 Hua Hin SF

ROAD TO THE SEMIFINAL

PATRICIA MARIA TIG (ROU #105)

QF: d. [4] SAISAI ZHENG (CHN #36) 6-4,6-2 (1h39)

R16: d. XIAODI YOU (CHN #210) 6-1,6-3 (1h14)

R32: d. [6] YAFAN WANG (CHN #56) 6-1,1-6,7-6(5) (2h13)

Total games: 61
 Won/lost: 38-23
 Sets won/lost: 6-1
 Total time on court: 5h06
 Average time on court: 1h42
 Average rank of opponent: 101

[5] MAGDA LINETTE (POL #42)

QF: d. (#134) 2-6,6-3,6-3 (1h56)

R16: d. SHUAI PENG (CHN #106) 7-5,6-1 (1h35)

R32: d. KATERYNA BONDARENKO (UKR #495) 6-2,6-2 (1h06)

Total games: 61
 Won/lost: 39-22
 Sets won/lost: 6-1
 Total time on court: 4h37
 Average time on court: 1h32
 Average rank of opponent: 245



MATCH NOTES

HUA HIN - THAILAND | Feb 10 - Feb 16, 2020 | \$275,000 | INTERNATIONAL

HUA HIN Tournament History

"-Q" Qualifying match

MAGDA LINETTE

2019

SF L - DAYANA YASTREMSKA (UKR #47) 6-4 6-3

2018

QF L - TIMEA BABOS (HUN #45) 6-1 6-3

2017

R1 L - LIN ZHU (CHN #122) 6-3 5-7 6-4

TIG:

- Making tournament debut at Hua Hin
- In 1r, defeated No.6 seed Wang Y. in a lopsided 3 set match that ended with a third set tiebreak
- Earned a more straightforward win in 2r over another Chinese player, You
- Defeated No.4 seed Zheng in QF for first Top 50 win since 2019 Bucharest
- Wins in first three rounds were first of the year having fallen in qualifying of Australian Open (I. Hernandez)
- Owns 2-1 record in career WTA semifinals – last advanced at this stage at 2019 Bucharest
- So far this year on ITF circuit, won SF match in Canberra over Raina before pulling out before the final (I. French by def.)
- Returned to Top 200 in 2019 for first time since 2017 – did not play from August 2017 to April 2019 due to injuries and the birth of her daughter Sofia in November 2018
- Reached final in 2019 Bucharest (I. Rybakina) after receiving wildcard and coming through qualifying – entered the tournament without a ranking
- En route to final appearance, defeated World No.11 and defending champion Sevastova for second Top 20 win of her career
- Also in 2019, won three combined titles on ITF Circuit and WTA 125K events – owns 15 titles on ITF/WTA 125K events
- Reached career high ranking of No.83 on April 10, 2017 after coming through qualifying and reaching 3r of Miami (d. Watson, Mladenovic; I. V.Williams)
- Has played in the main draw one time at each Grand Slam and fallen at 1r each time– 2017 Roland Garros (I. Pavlyuchenkova), 2017 Australian Open (I. Puig), 2016 US Open (I. Siegemund) and 2016 Wimbledon (I. Errani)
- Made QF at Madrid in 2016 for first time at a Premier Mandatory (I. Stosur) – defeated Gibbs, Sakkari in qualifying and Kasatkina, Stephens, Keys in main draw matches
- Reached first WTA final at Baku in 2015 (I. Gasparyan)
- Made WTA main draw debut at 2015 Bucharest (I. Hercog) and WTA qualifying debut at 2014 Bucharest
- Made professional debut on ITF circuit in 2009

LINETTE:

- Playing for fourth consecutive time at the Hua Hin tournament where she has matched her best result reaching SF in 2019 (I. eventual champion Yastremska), QF in 2018 and ell in 1r in 2017 (I. Zhu)
- Won her first two matches in straight sets over Bondarenko in 1r and Peng in 2r
- Defeated teenager Wang Xiyu for first SF appearance of the year
- Owns 3-2 record in career WTA semifinals – last advanced at 2019 Seoul (I. Muchova)
- Posted first career Top 50 year-end finish in 2019 after reaching her career high of No.41 on Sept. 30
- Won maiden WTA singles titles at the Bronx and finished R-Up at Seoul (I. Muchova)
- Other 2019 highlights include SF at Hua Hin (I. eventual champion Yastremska), QF at Nanchang (I. eventual champion Peterson), Tianjin (I. Watson)
- Posted fourth consecutive Top 100 season in 2018 at No.83
- Reached QF at 2018 Washington DC (I. Vekic); win over No.17 Osaka in 2r was first Top 20 victory – previous career-best win came over No.21 Gavrilova at 2017 Tokyo [PPO]
- Appeared in third career WTA doubles final at 2017 Bogotá (w/Cepede Royg), having also been runner-up at 2014 Guangzhou (w/Cornet) and 2016 Hong Kong (w/Xu)
- 2017 highlighted by SF at Kuala Lumpur (I. Hibino). Also made QF at Bogotá and reached 3r at major for first time at Roland Garros
- In 2016 enjoyed run to first Premier-level quarterfinal of career at Tokyo [PPO] (as qualifier, I. eventual champion Wozniacki)
- Broke into Top 100 on June 15, 2015
- Reached maiden WTA singles final at 2015 Tokyo [Japan Open] (I. Wickmayer)
- At WTA 125K Series level, won title at Ningbo in 2014 and was R-Up at Bol in 2018
- At 2013 Baku, made SF in second WTA main draw appearance (I. Peer)
- Played first two WTA main draws in 2013: 2r at Strasbourg (I. Cornet) and SF at Baku (I. Peer)
- Made professional debut on ITF Circuit in Poland in 2007 - owns 10 singles titles and eight doubles titles at that level



MATCH NOTES

HUA HIN - THAILAND | Feb 10 - Feb 16, 2020 | \$275,000 | INTERNATIONAL

[8] NAO HIBINO (JPN #84) vs. [Q] LEONIE KUNG (SUI #283)

Head to Head: 0-0

NAO HIBINO	WTA RANKING	LEONIE KUNG
84		283
54	PORSCHE RACE TO SHENZHEN LEADERBOARD	135
28-11-1994 (25)	DATE OF BIRTH (AGE)	21-10-2000 (19)
\$103,544	YTD PRIZE MONEY	\$3,584
\$1,527,277	CAREER PRIZE MONEY	\$60,250
0 / 2	SINGLES TITLES (YTD / CAREER)	0 / 0
0 / 2	DOUBLES TITLES (YTD / CAREER)	0 / 0
4-2	HUA HIN W-L (MD) *	3-0
4-1 / 48-56	YTD / CAREER W-L (MD) *	3-0 / 3-1
1-0 / 16-13	YTD / CAREER 3-SET W-L (MD) *	1-0 / 1-0
2-1 / 12-11	YTD / CAREER TIE-BREAK W-L (MD) *	0-0 / 0-0
4-1 / 45-43	YTD / CAREER HARD W-L (MD) *	3-0 / 3-0
0-0 / 4-4	YTD / CAREER Left Hander W-L (MD) *	0-0 / 0-0
1-0 / 1-4	YTD / CAREER TOP 5 W-L (MD & Q) *	0-0 / 0-0
1-0 / 1-6	YTD / CAREER TOP 10 W-L (MD & Q) *	0-0 / 0-0
1-0 / 2-7	YTD / CAREER TOP 20 W-L (MD & Q) *	0-0 / 0-0

* Updated entering 2020 Hua Hin SF

ROAD TO THE SEMIFINAL

[8] NAO HIBINO (JPN #84)

QF: d. [1] ELINA SVITOLINA (UKR #4) 6-4,6-2 (1h17)

R16: d. PEANGTARN PLIPUECH (THA #286) 6-0,6-1 (0h53)

R32: d. ARINA RODIONOVA (AUS #147) 7-6(5),7-5 (1h56)

Total games: 56
 Won/lost: 38-18
 Sets won/lost: 6-0
 Total time on court: 4h06
 Average time on court: 1h22
 Average rank of opponent: 146

[Q] LEONIE KUNG (SUI #283)

R2-Q: d. FANG YING XUN (CHN #207) 6-4,6-3 (1h31)

R1-Q: d. YANIN WISITWARAPON (THA #9,999) 6-0,6-1 (0h44)

QF: d. [3] QIANG WANG (CHN #27) 7-5,4-6,6-4 (2h17)

R16: d. [7] LIN ZHU (CHN #70) 6-3,6-1 (1h10)

R32: d. PATCHARIN CHEAPCHANDEJ (THA #811) 6-0,6-3 (0h51)

Total games: 63
 Won/lost: 41-22
 Sets won/lost: 6-1
 Total time on court: 4h18
 Average time on court: 1h26
 Average rank of opponent: 303

HUA HIN Tournament History

"-Q" Qualifying match

NAO HIBINO

2018

R16 L - SABINE LISICKI (GER #246) 6-4 6-1



MATCH NOTES

HUA HIN - THAILAND | Feb 10 - Feb 16, 2020 | \$275,000 | INTERNATIONAL

2017

R1 L - MISAKI DOI (JPN #41)

6-2 2-6 6-4

HIBINO:

- Making third tournament appearance and first since moving to Hua Hin – fell in 1r at 2017 (l. Doi) and 2r in 2018 (l. Lisicki)
- Doubles runner-up w/Kalashnikova in 2018 (l. Duan/Wang.Y)
- Defeated Rodionova in 1r in two tight sets and followed it up with a dominant performance over Plieuch in 2r
- Ousted No.1 seed and World No.4 for best by-ranking win of career – previous best was over No.18 Stosur at 2016 Hong Kong
- Owns 5-1 record in WTA semifinals – last advanced at 2019 Hiroshima (d. Doi in F)
- Coming off 2r showing in Melbourne after coming through qualifying (l. Sakkari) – win over Peng in 1r was first main draw win at Australian Open
- Her showing in Melbourne was her first Grand Slam main draw appearance since 2018 Australian Open and second time reaching 2r at a Grand Slam (also 2017 US Open)
- Finished 2019 at No.102 after winning her second career title at Hiroshima (d. Doi in F) – also w/Doi won the doubles title at Hiroshima (d. McHale/Savinykh)
- Won first career doubles title at 2017 Monterrey w/Rosolska (d. Jakupovic/N.Kichenok)
- Won first career Grand slam match at 2017 US Open defeating No.36 Bellis in 1r (l. Safarova)
- Reached career high ranking of No.56 on February 6, 2016 after reaching QF in Auckland (l. Goerges), 2r at Hobart (l. Giorgi) and making Grand Slam main draw debut at Australian Open (l. Sharapova in 1r)
- Made WTA main draw debut at Tokyo in 2015 (l. Brengle in 2r) – won her first career title a few weeks later at Tashkent (d. Vekic in F)
- Result helped her break into Top 100 for the first time on October 5, 2015
- Made professional debut on ITF circuit in 2012 – winning three titles that year, now owns eight ITF titles
- Coached by Eiji Takeuchi
- Started playing tennis at age 10

KUNG:

- Making tournament debut here in Hua Hin in only second career WTA main draw appearance
- Earned first career WTA main draw wins in previous rounds over Cheapchandej in 1r and No.7 Zhu in 2r
- Shocked No.3 seed Wang Q. in QF to make first career WTA SF
- Coming off four ITF tournament appearances most recently reaching SF at ITF \$25k/Nonthaburi-THA (l. Raina)
- Broke into WTA Top 300 earlier this year on Feb. 3
- Made WTA main draw debut in 2018 Gstaad (l. Larsson in 1r) – has yet to play in a major main draw
- Also in 2018, finished R-Up in Wimbledon junior's final (l. Swiatek) – defeated McNally and Wang, Xiy. in QF and SF
- Owns five singles titles on ITF circuit, most recently at ITF \$15k/Anatalya 31-TUR (d. Craciun)
- Made professional debut on ITF circuit in 2014

WTATennis Website: www.wtatennis.com | @WTATennis | facebook.com/wtatennis
Tournament Website: www.thailandopenhuahin.com | @ThailandOpenHH | facebook.com/WTAThailandOpen
WTATennis Communications: Darrelle Eng (Deng@wtatennis.com)

SAP Tennis Analytics for Media is an online portal that provides real-time data and insights to media during every WTA event and across all devices. Please email sapanalyticsmedia@wtatennis.com to request your individual login to grant access to SAP Tennis Analytics for Media.

HUA HIN – QUICK FACTS

Main draw dates: Monday, February 10 – Sunday, February 16
Singles Final: Sunday, February 16, 2020, 5:00pm
Doubles Final: Sunday, February 16, 2020, 2:30pm
Venue: True Arena Hua Hin
Status: WTA International event
Staging: Tournament's 2nd year (previous WTA event in Pattaya City from 1991-2003, 2005-15)
Draw sizes: 32 singles / 16 doubles teams / 24 singles qualifying
19' Singles Winner: D. Yastremska (UKR) d. A. Tomljanovic (AUS) 62, 26, 76(3)
19' Doubles Winner: I. Begu / M. Niculescu (ROU/ROU) d. A. Blinkova / Y. Wang (RUS/CHN) 26, 61, 12-10
Surface: Plexicushion
Total prize money: USD \$275,000
Tennis Ball: Babolat Team

SINGLES	USD \$	RANK POINTS
Winner	43,000	280
Runner-Up	21,410	180
Semifinalist	11,600	110
Quarterfinalist	6,275	60
Round of 16	3,600	30
Round of 32	2,300	1

DOUBLES	USD \$	RANK POINTS
Winner	13,580	280
Runner-Up	7,200	180
Semifinalist	4,000	110
Quarterfinalist	2,300	60
Round of 16	1,520	1

MAIN DRAW QUICK-HITS*

Singles wildcards: Patcharin Cheapchandej (THA), Petra Martic (CRO), Qiang Wang (CHN)
Youngest singles player: Xiyu Wang, 18 years old
Oldest singles player: Peng Shuai, 34 years old
Singles withdrawals: Eugenie Bouchard (Wrist Injury) – received wildcard into event

*Includes qualifiers

TOURNAMENT TALKING POINTS

- The WTA returns to Thailand for the second time in five years, as the PTT Thailand Open ran from 1991-2003, 2005-2015. Ajla Tomljanovic reached the final at the PTT Thailand Open in 2015, falling to Daniela Hantuchova
- The 2020 GSB Thailand Open presented by E@ includes five Top 50 players: **Magda Linette, Petra Martic, Elina Svitolina, Qiang Wang, and Saisai Zheng**
- Top seed **Svitolina** arrives off a R32 showing at the Australian Open (I. Muguruza), currently ranked No.4, and bidding to win her first title since 2018 WTA Finals
- Thailand will be represented by No. 811 **Patchar Cheapchandej** and Lucky Loser No. 285 **Peangtarn Plipuech**
- *One To Watch* – **Yafan Wang**. The 25-year-old from China has yet to gain momentum in the 2020 season, however this was the stage that catapulted her to her first title last season. After advancing to the quarterfinals here a year ago, **Wang** then went on to lift her maiden career title at Acapulco, defeating Kenin in the final in three sets.

COUNTRY AND REGION BREAKDOWN

Including qualifiers, a total of 17 countries are represented in the main draw, led by China with 10 players:

Australia (3)	Ellen Perez, Arina Rodionova, Storm Sanders
Austria (1)	Barbara Haas
China (10)	Xinyun Han, Peng Shuai, Qiang Wang, Xinyu Wang, Xiyu Wang, Yafan Wang, Xiaodi You, Yue Yuan, Saisai Zheng, Lin Zhu
Chinese Taipei (1)	En-Shou Liang
Croatia (1)	Petra Martic
France (1)	Chloe Paquet
India (1)	Ankita Raina
Japan (2)	Nao Hibino, Chihiro Muramatsu
Netherlands (1)	Bibiane Schoofs
Norway (1)	Ulrikke Eikeri
Poland (2)	Katarzyna Kawa, Magda Linette
Romania (1)	Patricia Maria Tig
Russia (1)	Varvara Flink
Serbia (1)	Natalija Kostic
Switzerland (1)	Leonie Kung
Thailand (2)	Patchar Cheapchandej, Peangtarn Plipuech
Ukraine (2)	Kateryna Bondarenko, Elina Svitolina

ALPHABETIC PLAYER LIST

MAIN DRAW SINGLES

2020 GSB Thailand Open presented by E@ - Hua Hin, THA



PLAYER NAME	RANK SEED			CAREER @ TRN		YEAR-TO-DATE			CAREER		CAREER HGH		TITLES	
	2/3/2020	NAT	AGE	PRIZE	W / L	PRIZE	W / L		PRIZE	W / L	RANK	DATE	YTD	CAR
BONDARENKO, KATERYNA	492	UKR	33		0 / 0	84,669	2 / 2		3,966,892	443 / 333	29	10/12/2009	0	2
W CHEAPCHANDEJ, PATCHAR	811	THA	25		0 / 0	770	2 / 1		34,564	119 / 90	464	9/24/2018		0
Q EIKERI, ULRIKKE	243	NOR	27		0 / 0		0 / 0		211,106	360 / 217	206	4/16/2018		0
FLINK, VARVARA	134	RUS	23		0 / 0	24,824	2 / 3		307,214	212 / 109	122	7/15/2019	0	0
HAAS, BARBARA	139	AUT	23		0 / 0	36,541	2 / 2		421,664	305 / 161	134	9/19/2016	0	0
HAN, XINYUN	186	CHN	29	5,318	0 / 1	28,255	0 / 1		1,172,728	379 / 305	105	10/24/2016	0	0
HIBINO, NAO	84	8 JPN	25	10,418	1 / 2	103,544	5 / 2		1,527,277	259 / 187	56	1/18/2016	0	2
KAWA, KATARZYNA	127	POL	27		0 / 0	15,882	2 / 3		233,820	297 / 212	123	12/16/2019	0	0
KOSTIC, NATALIJA	181	SRB	25		0 / 0	14,606	1 / 3		156,115	313 / 188	162	11/18/2019	0	0
Q KUNG, LEONIE	298	SUI	19		0 / 0	3,584	8 / 4		59,022	132 / 89	298	2/3/2020	0	0
Q LIANG, EN-SHUO	238	TPE	19	1,500	0 / 0	13,856	0 / 1		127,521	55 / 42	150	5/13/2019	0	0
LINETTE, MAGDA	42	5 POL	27	21,165	5 / 3	79,578	1 / 3		2,444,437	355 / 265	41	9/30/2019	0	1
W MARTIC, PETRA	15	2 CRO	29		0 / 0	92,250	2 / 2		4,918,636	342 / 235	14	1/13/2020	0	1
Q MURAMATSU, CHIIHIRO	214	JPN	21		0 / 0	24,959	7 / 3		97,790	169 / 109	214	2/3/2020	0	0
PAQUET, CHLOE	176	FRA	25	2,100	0 / 1	17,863	4 / 3		461,915	235 / 236	145	7/29/2019	0	0
PENG, SHUAI	106	CHN	34	28,618	5 / 3	82,298	1 / 2		9,600,518	496 / 321	14	8/22/2011	0	2
Q PEREZ, ELLEN	250	AUS	24		0 / 0	32,310	0 / 3		405,897	130 / 105	162	8/12/2019	0	0
L PLIPUECH, PEANGTARN	285	THA	27	3,490	0 / 0	474	1 / 1		213,934	282 / 238	175	7/31/2017		0
RAINA, ANKITA	198	IND	27	2,040	0 / 0	19,672	7 / 2		321,297	274 / 220	164	2/11/2019	0	0
RODIONOVA, ARINA	147	AUS	30	3,010	0 / 1	119,949	5 / 3		1,409,103	404 / 362	116	10/23/2017	0	0
Q SANDERS, STORM	317	AUS	25	480	0 / 0	45,013	3 / 2		387,099	134 / 125	202	2/10/2014	0	0
SCHOofs, BIBIANE	194	NED	31		0 / 0	15,759	1 / 3		393,484	359 / 218	142	6/11/2012	0	0
SVITOLINA, ELINA	4	1 UKR	25	43,000	5 / 0	136,706	2 / 2		19,371,666	370 / 193	3	9/11/2017	0	13
TIG, PATRICIA MARIA	105	ROU	25		0 / 0	15,490	4 / 1		708,308	263 / 158	83	4/10/2017	0	0
W WANG, QIANG	27	3 CHN	28		0 / 0	225,664	5 / 3		4,575,773	395 / 252	12	9/9/2019	0	2
WANG, XINYU	145	CHN	18		0 / 0	40,008	5 / 3		288,548	86 / 47	142	10/21/2019	0	0
WANG, XIYU	133	CHN	18		0 / 0	41,091	3 / 2		306,504	89 / 54	115	8/12/2019	0	0
WANG, YAFAN	56	6 CHN	25	27,025	5 / 2	79,763	1 / 3		1,922,309	238 / 165	47	10/7/2019	0	1
YOU, XIAODI	210	CHN	23		0 / 0	14,574	1 / 3		202,005	184 / 136	210	2/3/2020	0	0
YUAN, YUE		CHN	28		0 / 0		0 / 0		6,090	18 / 25	945	9/10/2012		0
ZHENG, SAISAI	36	4 CHN	26	10,903	2 / 2	116,661	1 / 2		3,678,035	311 / 214	36	10/14/2019	0	1
ZHU, LIN	70	7 CHN	26	8,755	2 / 2	109,584	1 / 3		1,178,099	318 / 205	70	2/3/2020	0	0



SVITOLINA, ELINA vs SCHOOFS, BIBIANE

There are no head to heads

EIKERI, ULRIKKE vs SANDERS, STORM

There are no head to heads

PLIPUECH, PEANGTARN vs PAQUET, CHLOE

There are no head to heads

KAWA, KATARZYNA vs RAINA, ANKITA

There are no head to heads

CHEAPCHANDEJ, PATCHARIN vs KUNG, LEONIE

There are no head to heads

FLINK, VARVARA vs ZHU, LIN

There are no head to heads

WANG, YAFAN vs TIG, PATRICIA MARIA

There are no head to heads

WANG, XINYU vs LIANG, EN-SHUO

There are no head to heads



KOSTIC, NATALIJA vs ZHENG, SAISAI

There are no head to heads

PENG, SHUAI vs YUAN, YUE

There are no head to heads

HAAS, BARBARA vs MURAMATSU, CHIHIRO

There are no head to heads

LINETTE, MAGDA vs BONDARENKO, KATERYNA

Year	Tournament Name	Surface	I-O	Round	Winner
2017	TOKYO	HARD	O	Q Q	LINETTE, MAGDA
2017	TIANJIN	HARD	O	R32	LINETTE, MAGDA

LINETTE, MAGDA 2 - 0

rank _ seed	rank _ seed	Scores
74 1	134 8	6-1 2-6 6-3
71 *	88 *	3-6 6-3 7-5

RODIONOVA, ARINA vs HIBINO, NAO

Year	Tournament Name	Surface	I-O	Round	Winner
2017	AUCKLAND	HARD	O	Q Q	RODIONOVA, ARINA
2019	BURNIE	HARD	O	R32	RODIONOVA, ARINA
2019	LAUNCESTON	HARD	O	Q	RODIONOVA, ARINA
2019	VANCOUVER	HARD	O	R16	HIBINO, NAO
2019	TIANJIN	HARD	O	Q R16	RODIONOVA, ARINA

RODIONOVA, ARINA 4 - 1

rank _ seed	rank _ seed	Scores
187 *	93 1	6-3 6-7(3) 6-4
172 *	115 2	6-3 7-5
172 *	115 2	7-5 6-2
134 *	236 *	6-4 3-6 6-4
236 *	90 1	3-6 6-3 7-5

WANG, QIANG vs HAN, XINYUN

Year	Tournament Name	Surface	I-O	Round	Winner
2007	CHENGDU CITY 2	HARD	O	R32	HAN, XINYUN
2008	GUANGZHOU	HARD	O	Q R16	HAN, XINYUN
2012	SANYA	HARD	O	F	WANG, QIANG
2012	KURUME	GRASS	O	R32	WANG, QIANG
2015	ANNING	CLAY	O	Q	HAN, XINYUN
2015	BANGKOK 6	HARD	O	S	WANG, QIANG
2015	NANCHANG	HARD	O	R16	HAN, XINYUN
2017	KUALA LUMPUR	HARD	O	Q	HAN, XINYUN
2017	NANCHANG	HARD	O	R16	HAN, XINYUN

HAN, XINYUN 6 - 3

rank _ seed	rank _ seed	Scores
368 6	899 *	6-0 6-0
263 5	592 *	6-3 6-3
243 7	389 *	6-2 6-4
224 3	311 *	6-3 6-2
266 *	100 2	6-3 6-2
*	1 *	7 6-4 RET
183 *	101 3	7-6(0) 6-3
139 *	60 6	6-7(4) 6-2 6-4
126 *	48 4	5-7 7-6(2) 6-3

GSB Thailand Open presented by E@ - Hua Hin, THA
Head-to-Heads



YOU, XIAODI vs PEREZ, ELLEN

YOU, XIAODI 1 - 0

Year	Tournament Name	Surface	I-O	Round	Winner	rank _ seed	rank _ seed	Scores
2019	ZHENGZHOU	HARD	O	Q R32	YOU, XIAODI	246	* 164 3	7-6(5) 6-2

WANG, XIYU vs MARTIC, PETRA

There are no head to heads

TAIPEI CITY

PREVIOUS CHAMPIONS



TOURNAMENT RND	WINNER OPPONENT	SCORE	RANK	SEED
2019 HUA HIN 03 FEB 2019	THAILAND	WTB HARD OUTDOOR	Draw Sngl 32 Prize USD \$226,750 (\$250,000) Draw Dbl 16	
Singles	YASTREMSKA, DAYANA UKR		47	8
F	def TOMLJANOVIC, AJLA AUS	6-2 2-6 7-6(3)	49	6
Doubles	BEGU I. ROU / NICULESCU M. ROU		106	2
F	def BLINKOVA A. RUS / WANG Y. CHN	2-6 6-1 12-10	194	
2018 TAIPEI CITY 04 FEB 2018	CHINESE TAIPEI	WTB HARD INDOOR	Draw Sngl 32 Prize USD \$226,750 (\$250,000) Draw Dbl 16	
Singles	BABOS, TIMEA HUN		45	4
F	def KOZLOVA, KATERYNA UKR	7-5 6-1	85	
Doubles	DUAN Y. CHN / WANG Y. CHN		384	
F	def HIBINO N. JPN / KALASHNIKOVA O. GE	7-6(4) 7-6(5)	111	
2017 TAIPEI CITY 05 FEB 2017	CHINESE TAIPEI	WTB HARD INDOOR	Draw Sngl 32 Prize USD \$226,750 (\$250,000) Draw Dbl 16	
Singles	SVITOLINA, ELINA UKR		13	1
F	def PENG, SHUAI CHN	6-3 6-2	71	
Doubles	CHAN H. TPE / CHAN Y. TPE		26	1
F	def HRADECKA L. CZE / SINIAKOVA K. CZE	6-4 6-2	54	2



Singles Activity: HAN, XINYUN

2018 TAIPEI CITY				04 Feb 2018	CHINESE TAIPEI	INDOOR	HARD	Draw: 32
							Rank: 131	Seed:
Q-R32	W	HSIEH, SHU-YING TPE		6-3 6-3		9999		
Q-R16	W	PLIPUECH, PEANGTARN THA		6-7(6) 6-2 6-2		230		
R32	L	LINETTE, MAGDA POL		6-2 6-0		60		7
-----This Event Only-----								
W/ L		2	/	1	RANK POINTS:	18.00	USD PRIZE:	2,100
2019 HUA HIN				03 Feb 2019	THAILAND	OUTDOOR	HARD	Draw: 32
							Rank: 166	Seed:
Q-R32	W	WISITWARAPRON, YANIN THA		6-1 6-1		0		
Q-R16	L	DUAN, YINGYING CHN		6-1 2-6 7-5		201		
-----This Event Only-----								
W/ L		3	/	2	RANK POINTS:	12.00	USD PRIZE:	1,020
Tournament Match Record:				3	/	2	For GSB Thailand Open presented by E@ - Hua Hin, THA	



Singles Activity: HIBINO, NAO

2017 TAIPEI CITY				05 Feb 2017	CHINESE TAIPEI	INDOOR	HARD	Draw: 32
							Rank: 102	Seed:
R32	L	DOI, MISAKI JPN	6-2 2-6 6-4				41	6
-----This Event Only-----								
	W/ L	0 / 1	RANK POINTS:	1.00	USD PRIZE:	2,100		
2018 TAIPEI CITY				04 Feb 2018	CHINESE TAIPEI	INDOOR	HARD	Draw: 32
							Rank: 93	Seed:
R32	W	STOSUR, SAMANTHA AUS	7-6(6) 6-2				39	3
R16	L	LISICKI, SABINE GER	6-4 6-1				246	
-----This Event Only-----								
	W/ L	1 / 2	RANK POINTS:	30.00	USD PRIZE:	3,400		
Tournament Match Record: 1 / 2 For GSB Thailand Open presented by E@ - Hua Hin, THA								



Singles Activity: LIANG, EN-SHUO

2019 HUA HIN

03 Feb 2019

THAILAND

OUTDOOR

HARD

Draw: 32

Rank: 243 Seed:

Q-R32 W KOVINIC, DANKA MNE

6-1 6-3

167

Q-R16 L RUS, ARANTXA NED

6-2 7-6(2)

128

-----This Event Only-----

W/ L 1 / 1

RANK POINTS:

12.00

USD PRIZE:

1,020

Tournament Match Record: 1 / 1 For GSB Thailand Open presented by E@ - Hua Hin, THA



Singles Activity: LINETTE, MAGDA

2017 TAIPEI CITY			05 Feb 2017	CHINESE TAIPEI	INDOOR	HARD	Draw: 32
						Rank: 95	Seed:
R32	L	ZHU, LIN CHN	6-3 5-7 6-4			122	
-----This Event Only-----							
	W/L	0 / 1	RANK POINTS:	1.00	USD PRIZE:	2,100	
2018 TAIPEI CITY			04 Feb 2018	CHINESE TAIPEI	INDOOR	HARD	Draw: 32
						Rank: 60	Seed: 7
R32	W	HAN, XINYUN CHN	6-2 6-0			131	
R16	W	LARSSON, JOHANNA SWE	6-1 6-7(4) 7-6(3)			83	
Q	L	BABOS, TIMEA HUN	6-1 6-3			45	4
-----This Event Only-----							
	W/L	2 / 2	RANK POINTS:	60.00	USD PRIZE:	6,175	
2019 HUA HIN			03 Feb 2019	THAILAND	OUTDOOR	HARD	Draw: 32
						Rank: 98	Seed:
R32	W	HON, PRISCILLA AUS	6-1 2-6 6-2			142	
R16	W	NICULESCU, MONICA ROU	4-6 6-3 6-2			100	
Q	W	WANG, YAFAN CHN	6-2 6-3			60	
S	L	YASTREMSKA, DAYANA UKR	6-4 6-3			47	8
-----This Event Only-----							
	W/L	5 / 3	RANK POINTS:	110.00	USD PRIZE:	11,500	
Tournament Match Record: 5 / 3 For GSB Thailand Open presented by E@ - Hua Hin, THA							



Singles Activity: No records exist for

Draw:
Rank: Seed:

-----This Event Only-----
W/ L 0 / 0 RANK POINTS: .00 USD PRIZE:

Tournament Match Record: 0 / 0 For GSB Thailand Open presented by E@ - Hua Hin, THA



Singles Activity: PAQUET, CHLOE

2019 HUA HIN

03 Feb 2019

THAILAND

OUTDOOR

HARD

Draw: 32

Rank: 221 Seed:

Q-R32 W THANDI, KARMAN IND

6-3 7-5

210

Q-R16 W YANG, ZHAOXUAN CHN

6-3 6-3

623

R32 L PENG, SHUAI CHN

6-2 6-3

129

-----This Event Only-----

W/L 2 / 1

RANK POINTS:

18.00

USD PRIZE:

2,100

Tournament Match Record:

2

/

1

For GSB Thailand Open presented by E@ - Hua Hin, THA



Singles Activity: PENG, SHUAI

2017 TAIPEI CITY			05 Feb 2017	CHINESE TAIPEI	INDOOR	HARD	Draw: 32
						Rank: 71	Seed:
R32	W	ZHENG, SAISAI CHN	6-2	6-2		92	
R16	W	SINIAKOVA, KATERINA CZE	6-1	6-3		40	5
Q	W	STOSUR, SAMANTHA AUS	6-4	6-4		23	2
S	W	SAFAROVA, LUCIE CZE	6-4	6-2		55	
F	L	SVITOLINA, ELINA UKR	6-3	6-2		13	1
-----This Event Only-----							
W/L 4 / 1			RANK POINTS:	180.00	USD PRIZE:	21,400	
2018 TAIPEI CITY			04 Feb 2018	CHINESE TAIPEI	INDOOR	HARD	Draw: 32
						Rank: 31	Seed: 1
R32	L	BOGDAN, ANA ROU	6-4	6-1		89	
-----This Event Only-----							
W/L 4 / 2			RANK POINTS:	1.00	USD PRIZE:	2,100	
2019 HUA HIN			03 Feb 2019	THAILAND	OUTDOOR	HARD	Draw: 32
						Rank: 129	Seed:
R32	W	PAQUET, CHLOE FRA	6-2	6-3		221	
R16	L	YASTREMSKA, DAYANA UKR	6-1	6-4		47	8
-----This Event Only-----							
W/L 5 / 3			RANK POINTS:	30.00	USD PRIZE:	3,400	
Tournament Match Record: 5 / 3 For GSB Thailand Open presented by E@ - Hua Hin, THA							



Singles Activity: PLIPUECH, PEANGTARN

2018 TAIPEI CITY				04 Feb 2018	CHINESE TAIPEI	INDOOR	HARD	Draw: 32
						Rank:	230	Seed:
Q-R32	W	ZHANG, LING HKG		6-4 1-6 6-2		331		
Q-R16	L	HAN, XINYUN CHN		6-7(6) 6-2 6-2		131		
-----This Event Only-----								
W/ L		1	/	1	RANK POINTS:	12.00	USD PRIZE:	1,020
2019 HUA HIN				03 Feb 2019	THAILAND	OUTDOOR	HARD	Draw: 32
						Rank:	286	Seed:
Q-R32	L	SHIMIZU, AYANO JPN		6-2 6-4		214		
-----This Event Only-----								
W/ L		1	/	2	RANK POINTS:	1.00	USD PRIZE:	600

Tournament Match Record:		1	/	2	For GSB Thailand Open presented by E@ - Hua Hin, THA			



Singles Activity: RAINA, ANKITA

2018 TAIPEI CITY			04 Feb 2018	CHINESE TAIPEI	INDOOR	HARD	Draw: 32
						Rank: 258	Seed:
Q-R32	W	LISTER, CORNELIA SWE	6-2	6-0		421	
Q-R16	L	BLINKOVA, ANNA RUS	6-3	6-4		159	
-----This Event Only-----							
	W/L	1 / 1	RANK POINTS:	12.00	USD PRIZE:	1,020	
2019 HUA HIN			03 Feb 2019	THAILAND	OUTDOOR	HARD	Draw: 32
						Rank: 168	Seed:
Q-R32	W	NG, KWAN YAU HKG	6-0	6-0		759	
Q-R16	L	PERRIN, CONNY SUI	7-6(1)	6-3		144	
-----This Event Only-----							
	W/L	2 / 2	RANK POINTS:	12.00	USD PRIZE:	1,020	
Tournament Match Record: 2 / 2 For GSB Thailand Open presented by E@ - Hua Hin, THA							



Singles Activity: RODIONOVA, ARINA

2018 TAIPEI CITY

04 Feb 2018

CHINESE TAIPEI

INDOOR

HARD

Draw: 32

Rank: 124

Seed:

R32 L BABOS, TIMEA HUN

6-3 6-2

45

4

-----This Event Only-----

W/L 0 / 1

RANK POINTS:

1.00

USD PRIZE:

2,100

Tournament Match Record:

0

/

1

For GSB Thailand Open presented by E@ - Hua Hin, THA



Singles Activity: SVITOLINA, ELINA

2017 TAIPEI CITY			05 Feb 2017	CHINESE TAIPEI	INDOOR	HARD	Draw: 32
						Rank: 13	Seed: 1
R32	W	RODINA, EVGENIYA RUS		6-0 6-3		83	
R16	W	HRADECKA, LUCIE CZE		6-4 7-5		170	
Q	W	JABEUR, ONS TUN		6-1 3-6 7-6(4)		181	
S	W	MINELLA, MANDY LUX		6-3 6-2		93	
F	W	PENG, SHUAI CHN		6-3 6-2		71	
-----This Event Only-----							
W/ L 5 / 0			RANK POINTS:	280.00	USD PRIZE:	43,000	

Tournament Match Record: 5 / 0			For GSB Thailand Open presented by E@ - Hua Hin, THA				



Singles Activity: WANG, YAFAN

2018 TAIPEI CITY				04 Feb 2018	CHINESE TAIPEI	INDOOR	HARD	Draw: 32
							Rank: 152	Seed:
R32	W	OZAKI, RISA JPN		6-2	6-4		132	
R16	W	PARMENTIER, PAULINE FRA		6-3	6-3		91	8
Q	W	BOUCHARD, EUGENIE CAN		6-4	6-0		121	
S	L	BABOS, TIMEA HUN		6-3	6-4		45	4
-----This Event Only-----								
	W/L	3 / 1		RANK POINTS:	110.00	USD PRIZE:	11,500	
2019 HUA HIN				03 Feb 2019	THAILAND	OUTDOOR	HARD	Draw: 32
							Rank: 60	Seed:
R32	W	BLINKOVA, ANNA RUS		5-7	6-2	6-1	94	
R16	W	ZHANG, SHUAI CHN		4-1	RET		40	5
Q	L	LINETTE, MAGDA POL		6-2	6-3		98	
-----This Event Only-----								
	W/L	5 / 2		RANK POINTS:	60.00	USD PRIZE:	6,175	
Tournament Match Record: 5 / 2 For GSB Thailand Open presented by E@ - Hua Hin, THA								



Singles Activity: ZHENG, SAISAI

2017 TAIPEI CITY				05 Feb 2017	CHINESE TAIPEI	INDOOR	HARD	Draw: 32
							Rank: 92	Seed:
R32	L	PENG, SHUAI CHN	6-2 6-2				71	
-----This Event Only-----								
	W/ L	0 / 1	RANK POINTS:	1.00	USD PRIZE:	2,100		
2019 HUA HIN				03 Feb 2019	THAILAND	OUTDOOR	HARD	Draw: 32
							Rank: 42	Seed: 4
R32	W	MINELLA, MANDY LUX	6-7(8) 6-4 6-4				101	
R16	W	BEGU, IRINA-CAMELIA ROU	6-2 6-4				71	
Q	L	TOMLJANOVIC, AJLA AUS	6-1 6-3				49	6
-----This Event Only-----								
	W/ L	2 / 2	RANK POINTS:	60.00	USD PRIZE:	6,175		
Tournament Match Record: 2 / 2 For GSB Thailand Open presented by E@ - Hua Hin, THA								



Singles Activity: ZHU, LIN

2017 TAIPEI CITY			05 Feb 2017	CHINESE TAIPEI	INDOOR	HARD	Draw: 32
						Rank: 122	Seed:
R32	W	LINETTE, MAGDA POL	6-3	5-7	6-4	95	
R16	W	NARA, KURUMI JPN	4-6	6-1	6-2	87	
Q	L	MINELLA, MANDY LUX	1-6	6-3	7-5	93	
-----This Event Only-----							
	W/L	2 / 1	RANK POINTS:	60.00	USD PRIZE:	6,175	
2018 TAIPEI CITY			04 Feb 2018	CHINESE TAIPEI	INDOOR	HARD	Draw: 32
						Rank: 116	Seed:
R32	L	BOUCHARD, EUGENIE CAN	1-6	7-5	2-0 RET	121	
-----This Event Only-----							
	W/L	2 / 2	RANK POINTS:	1.00	USD PRIZE:	2,100	

Tournament Match Record:		2 / 2	For GSB Thailand Open presented by E@ - Hua Hin, THA				



2020 Results

TOURNAMENT	RND	OPPONENT	W/L	SCORE	CHAMP PTS	WTA RANK	SEED
2020 SHENZHEN CHINA	WTA \$651,750 M R32 M R16 M Q	HARD (O) DOI, MISAKI JPN ZHANG, SHUAI CHN PLISKOVA, KRISTYNA CZE	 W W L	 6-4 6-1 7-6(8) 6-3 6-4 6-4	60	1168 80 38 66	8
2020 AUSTRALIAN OPEN AUSTRALIA	GS \$22,756,069 M R128	HARD (O) RODIONOVA, ARINA AUS	L	3-6 7-6(5) 6-0	10	535 163	

2020 WIN/LOSS RECORD: 2 / 2

TOTAL 2020 WIN/LOSS RECORD: 2 / 2

CHEAPCHANDEJ, PATCHARIN



2020 Results

TOURNAMENT	RND	OPPONENT	W/L	SCORE	CHAMP PTS	WTA RANK	SEED
2020 NONTHABURI THAILAND	ITF \$25,000 M R32	HARD (O) XUN, FANG YING CHN	W	7-6(5) 7-6(4)		817	
	M R16	PLIPUECH, PEANGTARN THA	W	6-2 7-6(5)		220	8
	M Q	WANG, XINYU CHN	L	6-4 3-6 6-3		288	
						153	2

2020 WIN/LOSS RECORD: 2 / 1

TOTAL 2020 WIN/LOSS RECORD: /


2020 Results

TOURNAMENT	RND	OPPONENT	W/L	SCORE	CHAMP PTS	WTA RANK	SEED
2020 BRISBANE AUSTRALIA \$1,434,900	Q R32 WTA	HARD (O) SANDERS, STORM AUS	L	6-2 2-6 6-4	1	123 378	
2020 NONTHABURI THAILAND \$25,000	M R32 ITF	HARD (O) KOBORI, MOMOKO JPN	W	6-2 6-1		125 318	1
	M R16	KUEARUM, SUPAPITCH THA	L	0-6 6-4 6-3		1126	
2020 AUSTRALIAN OPEN AUSTRALIA \$22,756,069	Q R128 GS	HARD (O) DODIN, OCEANE FRA	W	7-6(3) 6-3	20	125 158	16
	Q R64	AIAVA, DESTANEE AUS	L	6-1 6-7(3) 6-4		266	

2020 WIN/LOSS RECORD: 2 / 3

TOTAL 2020 WIN/LOSS RECORD: 1 / 2

HAAS, BARBARA



2020 Results

TOURNAMENT	RND	OPPONENT	W/L	SCORE	CHAMP PTS	WTA RANK	SEED
2020 BRISBANE AUSTRALIA \$1,434,900	Q R32	WTA HARD (O) KUDERMETOVA, VERONIKA R	L	7-5 6-3	1	144 42	
2020 AUSTRALIAN OPEN AUSTRALIA \$22,756,069	GS Q R128 Q R64 Q R32	HARD (O) KUCOVA, KRISTINA SVK PATTINAMA KERKHOVE, LESLE MINNEN, GREET BEL	W W L	2-6 6-4 6-4 6-4 4-6 6-1 6-2 6-1	30	143 169 167 119	32 13

2020 WIN/LOSS RECORD: 2 / 2

TOTAL 2020 WIN/LOSS RECORD: 2 / 2

HAN, XINYUN



2020 Results

TOURNAMENT	RND	OPPONENT	W/L	SCORE	CHAMP PTS	WTA RANK	SEED
2020 AUSTRALIAN OPEN	GS	HARD (O)			2	185	
AUSTRALIA \$22,756,069 Q R128		SATRALOVA, DENISA CZE	L	6-2 6-1		223	

2020 WIN/LOSS RECORD: 0 / 1

TOTAL 2020 WIN/LOSS RECORD: 0 / 1



2020 Results

TOURNAMENT	RND	OPPONENT	W/L	SCORE	CHAMP PTS	WTA RANK	SEED
2020 AUCKLAND NEW ZEALAND	WTA \$251,750 Q R32 Q R16	HARD (O) WICKMAYER, YANINA BEL LI, ANN USA	W L	7-6(3) 2-6 6-1 6-3 6-4	10	105 149 145	5
2020 AUSTRALIAN OPEN AUSTRALIA	GS \$22,756,069 Q R128 Q R64 Q R32 M R128 M R64	HARD (O) LIANG, EN-SHUO TPE YUAN, YUE CHN ARRUABARRENA, LARA ESP PENG, SHUAI CHN SAKKARI, MARIA GRE	W W W W L	6-1 4-6 6-3 3-6 6-1 6-1 6-1 6-2 4-6 7-6(6) 6-3 7-6(4) 6-4	110	103 235 224 152 104 23	2 22

2020 WIN/LOSS RECORD: 5 / 2

TOTAL 2020 WIN/LOSS RECORD: 5 / 2



2020 Results

TOURNAMENT	RND	OPPONENT	W/L	SCORE	CHAMP PTS	WTA RANK	SEED
2020 BRISBANE AUSTRALIA \$1,434,900	Q R32	WTA HARD (O) DI LORENZO, FRANCESCA US	L	6-3 7-5	1	125 121	
2020 NONTHABURI THAILAND \$25,000	Q R32	ITF HARD (O) ANONTAWEEESIL, JAIPET THA	W	6-1 6-1		126 9999	1
	Q R16	DESAI, ZEEL IND	W	6-3 7-5		722	
		SAWANGKAEW, MANANCHAYA	L	6-2 6-2		553	10
2020 AUSTRALIAN OPEN AUSTRALIA \$22,756,069	Q R128	GS HARD (O) LOTTNER, ANTONIA GER	L	6-2 6-1	2	126 156	17

2020 WIN/LOSS RECORD: 2 / 3

TOTAL 2020 WIN/LOSS RECORD: 0 / 2

KOSTIC, NATALIJA



2020 Results

TOURNAMENT	RND	OPPONENT	W/L	SCORE	CHAMP PTS	WTA RANK	SEED
2020 CANBERRA (BENDIGO) AUSTRALIA	ITF \$25,000 M R32	HARD (O) PAAR, LAURA IOANA ROU	L	6-3 6-4		180 217	
2020 NONTHABURI THAILAND	ITF \$25,000 M R32 M R16	HARD (O) FETECAU, IRINA ROU KUNG, LEONIE SUI	W L	6-3 7-5 6-4 6-1		181 344 324	5
2020 AUSTRALIAN OPEN AUSTRALIA	GS \$22,756,069 Q R128	HARD (O) OSORIO SERRANO, MARIA CAI	L	2-6 6-1 6-1	2	181 204	

2020 WIN/LOSS RECORD: 1 / 3

TOTAL 2020 WIN/LOSS RECORD: 0 / 2



2020 Results

TOURNAMENT	RND	OPPONENT	W/L	SCORE	CHAMP PTS	WTA RANK	SEED
2020 HONG KONG	ITF	HARD (O)				333	
HONG KONG, CHINA	\$25,000 M R32	TAN, HARMONY FRA	W	7-5 2-0 RET		248	6
	M R16	WONG, HONG YI CODY HKG	W	6-2 6-3		1020	
	M Q	XUN, FANG YING CHN	L	2-6 6-2 6-3		243	3
2020 MALIBU 2	ITF	HARD (O)				331	
UNITED STATES	\$25,000 M R32	HESSE, AMANDINE FRA	L	5-7 6-3 6-4		250	1
2020 PETIT-BOURG (GUADELOUPE)	ITF	HARD (O)				324	7
FRANCE	\$25,000 M R32	KOUSSENKOVA, VALERIA ESP	W	6-0 6-1		1204	
	M R16	BLACK, HURRICANE USA	W	5-0 RET		629	
	M Q	GEORGES, MYRTILLE FRA	W	6-2 7-5		274	3
	M S	PODOROSKA, NADIA ARG	L	6-4 6-4		258	2
2020 NONTHABURI	ITF	HARD (O)				324	
THAILAND	\$25,000 M R32	SAWANGKAEW, MANANCHAYA	W	4-6 6-2 6-3		553	
	M R16	KOSTIC, NATALIJA SRB	W	6-4 6-1		181	5
	M Q	KUEARUM, SUPAPITCH THA	W	4-6 6-1 6-3		1126	
	M S	RAINA, ANKITA IND	L	6-3 6-1		171	3

2020 WIN/LOSS RECORD: 8 / 4

TOTAL 2020 WIN/LOSS RECORD: 5 / 3

LIANG, EN-SHUO



2020 Results

TOURNAMENT	RND	OPPONENT	W/L	SCORE	CHAMP PTS	WTA RANK	SEED
2020 AUSTRALIAN OPEN AUSTRALIA \$22,756,069 Q R128	GS	HARD (O) HIBINO, NAO JPN	L	6-1 4-6 6-3	2	235 103	2

2020 WIN/LOSS RECORD: 0 / 1

TOTAL 2020 WIN/LOSS RECORD: 0 / 1



2020 Results

TOURNAMENT	RND	OPPONENT	W/L	SCORE	CHAMP PTS	WTA RANK	SEED
2020 SHENZHEN CHINA	WTA \$651,750 M R32	HARD (O) ZHANG, SHUAI CHN	L	6-4 6-2	1	43 38	8
2020 HOBART AUSTRALIA	WTA \$251,750 M R32 M R16	HARD (O) KUZNETSOVA, SVETLANA RU: DAVIS, LAUREN USA	W L	7-6(2) 7-6(9) 6-4 6-4	30	43 53 65	6
2020 AUSTRALIAN OPEN AUSTRALIA	GS \$22,756,069 M R128	HARD (O) RUS, ARANTXA NED	L	1-6 6-3 6-4	10	43 93	

2020 WIN/LOSS RECORD: 1 / 3

TOTAL 2020 WIN/LOSS RECORD: 1 / 3

MARTIC, PETRA



2020 Results

TOURNAMENT	RND	OPPONENT	W/L	SCORE	CHAMP PTS	WTA RANK	SEED
2020 AUCKLAND NEW ZEALAND	WTA \$251,750 M R32 M R16	HARD (O) ARCONADA, USUE MAITANE L CORNET, ALIZÉ FRA	W L	5-7 6-4 6-4 3-6 6-4 6-4	30	15 135 57	2
2020 AUSTRALIAN OPEN AUSTRALIA	GS \$22,756,069 M R128 M R64	HARD (O) MCHALE, CHRISTINA USA GOERGES, JULIA GER	W L	6-3 6-0 4-6 6-3 7-5	70	14 84 39	13

2020 WIN/LOSS RECORD: 2 / 2

TOTAL 2020 WIN/LOSS RECORD: 2 / 2

MURAMATSU, CHIHIRO



2020 Results

TOURNAMENT		RND	OPPONENT	W/L	SCORE	CHAMP PTS	WTA RANK	SEED
2020 CANBERRA (BENDIGO)	ITF		HARD (O)				228	8
AUSTRALIA	\$25,000	Q R32	DA SILVA FICK, GABRIELLA AUS	W	6-4 6-2		534	
		Q R16	MELNIKOVA, MARINA RUS	W	6-4 6-3		225	6
		M R32	UEDA, RAMU JPN	W	7-5 7-5		622	
		M R16	BUCSA, CRISTINA ESP	W	6-7(3) 7-5 6-4		167	7
		M Q	FRECH, MAGDALENA POL	L	6-1 6-1		187	
2020 AUSTRALIAN OPEN	GS		HARD (O)			20	227	
AUSTRALIA	\$22,756,069	Q R128	MELNIKOVA, MARINA RUS	W	6-1 5-7 6-4		225	
		Q R64	LOTTNER, ANTONIA GER	L	6-3 5-7 6-2		156	
2020 BURNIE	ITF		HARD (O)				227	
AUSTRALIA	\$60,000	M R32	DA SILVA FICK, GABRIELLA AUS	W	6-4 6-4		534	
		M R16	OKAMURA, KYOKA JPN	W	6-3 6-4		238	
		M Q	POPOVIC, IVANA AUS	L	7-6(5) 4-6 6-4		459	

2020 WIN/LOSS RECORD: 7 / 3

TOTAL 2020 WIN/LOSS RECORD: 7 / 3

PAQUET, CHLOE



2020 Results

TOURNAMENT	RND	OPPONENT	W/L	SCORE	CHAMP PTS	WTA RANK	SEED
2020 BRISBANE AUSTRALIA \$1,434,900	Q R32 WTA	HARD (O) BRADY, JENNIFER USA	L	6-2 6-1	1	166 53	
2020 NONTHABURI THAILAND \$25,000	M R32 ITF	HARD (O) JUNDAKATE, CHOMPOOTHIP TI	W	3-6 6-1 6-0		178 660	4
	M R16	BJORKLUND, MIRJAM SWE	W	6-1 6-2		317	
	M Q	AMANMURADOVA, AKGUL UZB	W	6-1 6-4		456	
	M S	WANG, XINYU CHN	W	6-3 1-6 6-4		153	2
	M F	RAINA, ANKITA IND	L	6-3 7-5		171	3
2020 AUSTRALIAN OPEN AUSTRALIA \$22,756,069	Q R128 GS	HARD (O) GRACHEVA, VARVARA RUS	L	6-2 6-1	2	178 106	

2020 WIN/LOSS RECORD: 4 / 3

TOTAL 2020 WIN/LOSS RECORD: 0 / 2

PENG, SHUAI



2020 Results

TOURNAMENT	RND	OPPONENT	W/L	SCORE	CHAMP PTS	WTA RANK	SEED
2020 SHENZHEN CHINA	WTA \$651,750 M R32 M R16	HARD (O) ZHU, LIN CHN ALEXANDROVA, EKATERINA R	W L	6-2 3-6 6-3 7-6(7) 6-1	30	108 71 34	5
2020 AUSTRALIAN OPEN AUSTRALIA	GS \$22,756,069 M R128	HARD (O) HIBINO, NAO JPN	L	4-6 7-6(6) 6-3	10	104 103	

2020 WIN/LOSS RECORD: 1 / 2

TOTAL 2020 WIN/LOSS RECORD: 1 / 2

PEREZ, ELLEN



2020 Results

TOURNAMENT	RND	OPPONENT	W/L	SCORE	CHAMP PTS	WTA RANK	SEED
2020 BRISBANE AUSTRALIA \$1,434,900 Q	WTA R32	HARD (O) MLADENOVIC, KRISTINA FRA	L	6-4 4-6 6-4	1	247 37	
2020 AUSTRALIAN OPEN AUSTRALIA \$22,756,069 Q	GS R128	HARD (O) WICKMAYER, YANINA BEL	L	7-6(7) 6-1	2	249 147	
2020 BURNIE AUSTRALIA \$60,000 M	ITF R32	HARD (O) MYERS, ABBIE AUS	L	6-3 6-4		249 325	

2020 WIN/LOSS RECORD: 0 / 3

TOTAL 2020 WIN/LOSS RECORD: 0 / 3

PLIPUECH, PEANGTARN



2020 Results

TOURNAMENT	RND	OPPONENT	W/L	SCORE	CHAMP PTS	WTA RANK	SEED
2020 NONTHABURI THAILAND	ITF \$25,000 M R32 M R16	HARD (O) STEFANINI, LUCREZIA ITA CHEAPCHANDEJ, PATCHARIN 1	W L	6-4 6-1 6-2 7-6(5)		288 410 817	

2020 WIN/LOSS RECORD: 1 / 1

TOTAL 2020 WIN/LOSS RECORD: /



2020 Results

TOURNAMENT	RND	OPPONENT	W/L	SCORE	CHAMP PTS	WTA RANK	SEED
2020 CANBERRA (BENDIGO) AUSTRALIA	ITF \$25,000	HARD (O) DI GIUSEPPE, MARTINA ITA FALCONI, IRINA USA VICKERY, SACHIA USA TIG, PATRICIA MARIA ROU	W W W L	6-1 7-5 2-6 6-4 6-4 DEF 6-3 6-4		178 196 443 155 113	3 1
2020 NONTHABURI THAILAND	ITF \$25,000	HARD (O) SIMMONDS, CHANEL RSA DASCALU, NICOLETA ROU WALTERT, SIMONA SUI KUNG, LEONIE SUI PAQUET, CHLOE FRA	W W W W W	6-1 6-1 7-6(1) 6-2 6-4 4-6 6-4 6-3 6-1 6-3 7-5		171 351 280 279 324 178	3 4
2020 AUSTRALIAN OPEN AUSTRALIA	GS \$22,756,069	HARD (O) TOMOVA, VIKTORIYA BUL	L	6-2 7-6(2)	2	171 144	

2020 WIN/LOSS RECORD: 7 / 2

TOTAL 2020 WIN/LOSS RECORD: 2 / 2

RODIONOVA, ARINA



2020 Results

TOURNAMENT	RND	OPPONENT	W/L	SCORE	CHAMP PTS	WTA RANK	SEED		
2020 AUCKLAND NEW ZEALAND	WTA \$251,750 Q R32 Q R16	HARD (O) ANDERSON, ROBIN USA MINNEN, GREET BEL	W L	6-0 3-6 6-4 2-6 6-4 7-6(5)	10	202 162 109	6		
2020 ADELAIDE AUSTRALIA	WTA \$782,900 Q R32 Q R16 M R32 M R16	HARD (O) SUÁREZ NAVARRO, CARLA ES POTAPOVA, ANASTASIA RUS STEPHENS, SLOANE USA VONDROUSOVA, MARKETA Cž	W W W L	4-6 6-4 6-4 6-2 1-6 6-2 6-2 6-2 6-0 6-0	80	201 54 90 25 16	2 11 8		
2020 AUSTRALIAN OPEN AUSTRALIA	GS \$22,756,069 M R128 M R64	HARD (O) BONDARENKO, KATERYNA UK BERTENS, KIKI NED	W L	3-6 7-6(5) 6-0 6-3 7-5	70	163 535 10	9		
2020 WIN/LOSS RECORD:			5 / 3		TOTAL 2020 WIN/LOSS RECORD:			5 / 3	

SANDERS, STORM



2020 Results

TOURNAMENT	RND	OPPONENT	W/L	SCORE	CHAMP PTS	WTA RANK	SEED
2020 BRISBANE	WTA	HARD (O)			18	378	
AUSTRALIA \$1,434,900	Q R32	FLINK, VARVARA RUS	W	6-2 2-6 6-4		123	
	Q R16	WATSON, HEATHER GBR	W	6-2 3-6 6-3		102	
	Q Q	BRADY, JENNIFER USA	L	7-6(7) 6-1		53	
2020 AUSTRALIAN OPEN	GS	HARD (O)			20	349	
AUSTRALIA \$22,756,069	Q R128	ANDERSON, ROBIN USA	W	6-2 6-0		161	
	Q R64	JUVAN, KAJA SLO	L	6-0 2-6 6-3		127	18

2020 WIN/LOSS RECORD: 3 / 2

TOTAL 2020 WIN/LOSS RECORD: 3 / 2



2020 Results

TOURNAMENT	RND	OPPONENT	W/L	SCORE	CHAMP PTS	WTA RANK	SEED
2020 AUCKLAND NEW ZEALAND	WTA \$251,750 Q R32 Q R16	HARD (O) HIBI, MAYO JPN MCNALLY, CATHERINE USA	W L	7-5 7-6(8) 6-4 6-1	10	186 169 118	
2020 NONTHABURI THAILAND	ITF \$25,000 M R32	HARD (O) WALTERT, SIMONA SUI	L	6-1 6-4		186 279	6
2020 AUSTRALIAN OPEN AUSTRALIA	GS \$22,756,069 Q R128	HARD (O) COCCIARETTO, ELISABETTA I	L	6-7(4) 7-5 6-3	2	186 175	

2020 WIN/LOSS RECORD: 1 / 3

TOTAL 2020 WIN/LOSS RECORD: 1 / 2

SVITOLINA, ELINA



2020 Results

TOURNAMENT	RND	OPPONENT	W/L	SCORE	CHAMP PTS	WTA RANK	SEED
2020 BRISBANE AUSTRALIA \$1,434,900 M	WTA R32	HARD (O) COLLINS, DANIELLE USA	L	6-1 6-1	1	5 27	4
2020 AUSTRALIAN OPEN AUSTRALIA \$22,756,069 M	GS R128 M R64 M R32	HARD (O) BOULTER, KATIE GBR DAVIS, LAUREN USA MUGURUZA, GARBIÑE ESP	W W L	6-4 7-5 6-2 7-6(6) 6-1 6-2	130	5 315 62 32	5

2020 WIN/LOSS RECORD: 2 / 2

TOTAL 2020 WIN/LOSS RECORD: 2 / 2



2020 Results

TOURNAMENT	RND	OPPONENT	W/L	SCORE	CHAMP PTS	WTA RANK	SEED
2020 CANBERRA (BENDIGO) AUSTRALIA	ITF \$25,000 M R32 M R16 M Q M S M F	HARD (O) DE VROOME, INDY NED FOURLIS, JAIMEE AUS BONDAR, ANNA HUN RAINA, ANKITA IND FRECH, MAGDALENA POL	W W W W L	6-3 7-5 6-3 3-6 6-0 6-2 7-5 6-3 6-4 DEF		113 207 258 224 178 187	1
2020 AUSTRALIAN OPEN AUSTRALIA	GS \$22,756,069 Q R128	HARD (O) FERNANDEZ, LEYLAH CAN	L	6-2 6-3	2	108 207	7

2020 WIN/LOSS RECORD: 4 / 1

TOTAL 2020 WIN/LOSS RECORD: 4 / 1



2020 Results

TOURNAMENT	RND	OPPONENT	W/L	SCORE	CHAMP PTS	WTA RANK	SEED
2020 SHENZHEN CHINA	WTA \$651,750 M R32 M R16 M Q	HARD (O) JABEUR, ONS TUN SASNOVICH, ALIAKSANDRA B ALEXANDROVA, EKATERINA R	W W L	6-0 6-3 6-4 0-6 7-6(5) 3-6 6-4 6-3	60	28 81 69 34	4 5
2020 ADELAIDE AUSTRALIA	WTA \$782,900 M R32	HARD (O) KERBER, ANGELIQUE GER	L	6-1 6-3	1	28 18	 9
2020 AUSTRALIAN OPEN AUSTRALIA	GS \$22,756,069 M R128 M R64 M R32 M R16	HARD (O) PARMENTIER, PAULINE FRA FERRO, FIONA FRA WILLIAMS, SERENA USA JABEUR, ONS TUN	W W W L	7-6(2) 6-3 6-1 6-2 6-4 6-7(2) 7-5 7-6(4) 6-1	240	29 133 63 9 78	27 8
2020 WIN/LOSS RECORD:			5 / 3	TOTAL 2020 WIN/LOSS RECORD:			5 / 3



2020 Results

TOURNAMENT	RND	OPPONENT	W/L	SCORE	CHAMP PTS	WTA RANK	SEED
2020 SHENZHEN CHINA	WTA \$651,750 M R32	HARD (O) MUGURUZA, GARBIÑE ESP	L	3-6 6-3 6-0	1	153 35	6
2020 NONTHABURI THAILAND	ITF \$25,000 M R32	HARD (O) TERE-APISAH, ABIGAIL PNG	W	7-6(2) 6-3		153 452	2
	M R16	CHANG, KAI-CHEN TPE	W	6-2 7-5		601	
	M Q	CHEAPCHANDEJ, PATCHARIN T	W	6-4 3-6 6-3		817	
	M S	PAQUET, CHLOE FRA	L	6-3 1-6 6-4		178	4
2020 AUSTRALIAN OPEN AUSTRALIA	GS \$22,756,069 Q R128	HARD (O) FALCONI, IRINA USA	W	3-6 6-2 7-6(8)	30	153 424	
	Q R64	KIICK, ALLIE USA	W	6-0 6-1		138	28
	Q R32	KALINSKAYA, ANNA RUS	L	4-6 7-6(2) 6-2		109	5

2020 WIN/LOSS RECORD: 5 / 3

TOTAL 2020 WIN/LOSS RECORD: 2 / 2



2020 Results

TOURNAMENT	RND	OPPONENT	W/L	SCORE	CHAMP PTS	WTA RANK	SEED
2020 SHENZHEN CHINA	WTA \$651,750 M R32 M R16	HARD (O) CIRSTEA, SORANA ROU MERTENS, ELISE BEL	W L	3-6 6-1 6-1 6-4 6-3	30	140 74 17	3
2020 AUSTRALIAN OPEN AUSTRALIA	GS \$22,756,069 Q R128 Q R64 Q R32	HARD (O) HOGENKAMP, RICHEL NED OSORIO SERRANO, MARIA CA SAMSONOVA, LIUDMILA RUS	W W L	6-3 6-2 6-1 6-4 6-4 2-6 7-5	30	134 194 204 118	24 12

2020 WIN/LOSS RECORD: 3 / 2

TOTAL 2020 WIN/LOSS RECORD: 3 / 2

WANG, YAFAN



2020 Results

TOURNAMENT	RND	OPPONENT	W/L	SCORE	CHAMP PTS	WTA RANK	SEED
2020 SHENZHEN CHINA	WTA \$651,750 M R32 M R16	HARD (O) SORRIBES TORMO, SARA ESF RYBAKINA, ELENA KAZ	W L	1-6 6-1 6-3 6-3 6-4	30	50 90 36	7
2020 HOBART AUSTRALIA	WTA \$251,750 M R32	HARD (O) MUGURUZA, GARBIÑE ESP	L	6-1 7-5	1	51 34	2
2020 AUSTRALIAN OPEN AUSTRALIA	GS \$22,756,069 M R128	HARD (O) RISKE, ALISON USA	L	7-6(5) 2-6 6-3	10	51 19	18

2020 WIN/LOSS RECORD: 1 / 3

TOTAL 2020 WIN/LOSS RECORD: 1 / 3



2020 Results

TOURNAMENT	RND	OPPONENT	W/L	SCORE	CHAMP PTS	WTA RANK	SEED
2020 HONG KONG HONG KONG, CHINA	ITF \$25,000 M R32	HARD (O) CHONG, EUDICE HKG	L	6-3 3-6 6-3		215 379	1
2020 NONTHABURI THAILAND	ITF \$25,000 M R32 M R16	HARD (O) CHANTA, AUNCHISA THA AMANMURADOVA, AKGUL UZB	W L	7-6(4) 6-3 7-6(7) 6-1		211 730 456	7
2020 AUSTRALIAN OPEN AUSTRALIA	GS \$22,756,069 Q R128	HARD (O) BOUCHARD, EUGENIE CAN	L	4-6 7-6(4) 6-1	2	211 212	

2020 WIN/LOSS RECORD:

1 / 3

TOTAL 2020 WIN/LOSS RECORD:

0 / 2



2020 Results

TOURNAMENT	RND	OPPONENT	W/L	SCORE	CHAMP PTS	WTA RANK	SEED
2020 SHENZHEN CHINA	WTA \$651,750 M R32	HARD (O) RYBAKINA, ELENA KAZ	L	6-2 1-6 6-2	1	40 36	7
2020 AUSTRALIAN OPEN AUSTRALIA	GS \$22,756,069 M R128 M R64	HARD (O) KALINSKAYA, ANNA RUS OSAKA, NAOMI JPN	W L	6-3 6-2 6-2 6-4	70	42 109 4	3

2020 WIN/LOSS RECORD: 1 / 2

TOTAL 2020 WIN/LOSS RECORD: 1 / 2

ZHU, LIN



2020 Results

TOURNAMENT	RND	OPPONENT	W/L	SCORE	CHAMP PTS	WTA RANK	SEED
2020 SHENZHEN CHINA	WTA \$651,750 M R32	HARD (O) PENG, SHUAI CHN	L	6-2 3-6 6-3	1	71 108	
2020 HOBART AUSTRALIA	WTA \$251,750 M R32	HARD (O) KUZMOVA, VIKTORIA SVK	L	5-7 6-2 7-6(3)	1	71 61	
2020 AUSTRALIAN OPEN AUSTRALIA	GS \$22,756,069 M R128 M R64	HARD (O) GOLUBIC, VIKTORIJA SUI RISKE, ALISON USA	W L	4-6 6-1 7-6(5) 6-3 6-1	70	71 76 19	18

2020 WIN/LOSS RECORD: 1 / 3

TOTAL 2020 WIN/LOSS RECORD: 1 / 3